



Policy Name: <p style="text-align: center;">HAND HYGIENE</p>	Policy Number: <p style="text-align: center;">1702</p>
Approved By: <p style="text-align: center;">Executive Team</p>	Effective Date: <p style="text-align: center;">March 4, 2008</p>
Reason for Revision: Click on item below and select item from list. <p style="text-align: center;">CONTENT- Enter BELOW Reason for change Ex: Combined Policy ## and ##.</p> <ul style="list-style-type: none"> * Combined Policy 1702 & SOP 1702 & SOP (M). * Added where Electronic forms are kept - To Be Determined * Added where Hardcopy are located - in Educator's file cabinet. * New format being used. 	Date Revised: <p style="text-align: center;">October 4, 2018</p> Next Date for Review: <p style="text-align: center;">October 4, 2021</p>
Section: <p style="text-align: center;">Section 17 - Infection Prevention and Control</p>	Page No: <p style="text-align: center;">Page 1 of 8</p>

Policy

Hand hygiene is the single most important procedure that Health Care Workers can do to reduce the risk of transmitting microorganisms. The Salvation Army Agapé Hospice will follow the policy set out by the Alberta Health Services (AHS), Calgary Zone, for hand hygiene in order to provide safe care to its residents and protect health care providers from occupational infections.

Alcohol-base hand rub (ABHR) is an important tool used in health care to help reduce the risk of transmission of microorganisms. This helps keep residents and Staff safe. There are, however, some safety regulations that must be followed.

APPLICABILITY

All staff, and contracted service providers of Agapé Hospice and Maintenance Personnel.

POLICY ELEMENTS

1. Staff must be knowledgeable of, and comply with, the 4 moments of hand hygiene.
2. In the event staff are unable to perform proper hand hygiene due to a medical reason, (such as a cast, dressing, splint, etc.) they must speak with their immediate supervisor immediately.
3. Artificial nails, nail enhancements (including gel and acrylic nails) and chipped nail polish are strongly discouraged by staff who provide direct resident care or handle food as they harbor pathogens. Natural nails should be no more than ¼ inch in length.
4. Hand jewelry, including rings and bracelets, are strongly discouraged since they may interfere with effective removal of microorganisms. Rings should be limited to plain bands.
5. ABHR products and/or sinks for hand washing must be available as close as possible to the point of care.



Policy Name: HAND HYGIENE	Policy Number: 1702
	Date Revised: October 4, 2018
	Page No: Page 2 of 8

6. Only Alberta Health Services approved hand hygiene products are to be used. All AHS standards for hand hygiene product usage, storage, labelling, and installation and placement of dispensers will be followed.
7. Sinks used for handwashing must not be those normally used for equipment cleaning; blood, body fluid, waste disposal, or food preparation.
8. All staff will receive hand hygiene education upon initial orientation and on an annual basis.
9. Hand hygiene audits will be done on a quarterly basis, and reported to Alberta Health Services annually. Staff are made aware of any errors and corrected at the time of audit. Audit results are communicated to staff as required.

DEFINITIONS

Four (4) Moments of Hand Hygiene:

- a. Before contact with a resident or resident's environment including but not limited to: putting on (donning) personal protective equipment; entering a resident's room; and, providing care
- b. Before a clean or aseptic procedure including but not limited to: wound care; handling food; or preparing medications
- c. After exposure (or risk of exposure) to blood and/or body fluids, including but not limited to: when hands are visibly soiled, following removal of gloves
- d. After contact with a resident or resident's environment, including but not limited to: removing (doffing) personal protective equipment, leaving a resident's environment, and, after handling resident care equipment.

Hand Hygiene Products:

- a. include alcohol-based hand rub (ABHR), soap and hand lotion and hand hygiene accessories such as dispensers.

REQUIRED FORMS AND EQUIPMENT REFERENCES

Electronic forms location – FORMS

Hardcopy forms location – Educator's file cabinet

1. AHS Hand Hygiene Audit Report Form
 - Alcohol-Based Hand Rub (ABHR)



Policy Name: HAND HYGIENE	Policy Number: 1702
	Date Revised: October 4, 2018
	Page No: Page 3 of 8

- Hand Soap / Soap
- Hand lotion
- Wall mount dispensers

REFERENCES

Accreditation Canada. (2016). Required Organizational Practices Handbook 2017.
Alberta Health Services. (2011). PS-02. Infection Prevention and Control – Hand Hygiene Policy. October 20, 2011.
Alberta Health Services. (2011). Ps02-01. Hand Hygiene Procedures. October 20, 2011.

Procedure

Hand Hygiene:

1. Four Moments of Hand Hygiene:

1.1 Follow the attached handout.

2. Procedure for use of ABHR:

1.1 Ensure hands are not visibly soiled and are dry before use.

1.2 Apply 2-3 pumps of ABHR to the palm of one hand.

1.3 Vigorously rub product over all the surfaces of the hands and wrists, including: palms, spaces between fingers, back of hands and wrists, fingers, fingertips, and thumbs.

1.4 Hands must remain wet with the product for a minimum of 15 seconds.

1.5 Continue rubbing hands until they are completely dry.

1.6 Recommend periodic application of an approved hand lotion to assist in maintaining skin integrity.

3. Procedure for use of Hand Soap and Water:

1.1 Use when hands are visibly soiled.

1.2 Wet hands with warm water and apply enough soap to ensure all hand surfaces are lathered thoroughly.

1.3 Vigorously rub product over all the surfaces of the hands and wrists, including:



Policy Name: <p style="text-align: center;">HAND HYGIENE</p>	Policy Number: <p style="text-align: center;">1702</p>
	Date Revised: <p style="text-align: center;">October 4, 2018</p>
	Page No: <p style="text-align: center;">Page 4 of 8</p>

palms, spaces between fingers, back of hands and wrists, fingers, fingertips, and thumbs for a minimum of 15 seconds.

- 1.4 Rinse hands under warm running water
- 1.5 Pat hands dry with disposable paper towels.
- 1.6 Use paper towels to turn off faucets and to open door if necessary.
- 1.7 Discard towels.
- 1.8 Recommend periodic application of an approved hand lotion to assist in maintaining skin integrity.

Appropriate Product Selection for Hand Hygiene

Indication	ABHR is appropriate	Plain Soap and Water is appropriate
When hands are visibly soiled	NO	YES*
Before and after direct contact with a patient	YES*	YES
Before clean procedures	YES*	YES
Before aseptic procedures	YES*	Antimicrobial soap and water*
Before and after touching objects or equipment in the immediate area around the patient	YES*	YES
After patient care or contact with used equipment in the patient's immediate environment when the patient has diarrhea and/or vomiting	YES	YES*
During food handling	NO	YES*

*= indicated the preferred product choice



Policy Name: HAND HYGIENE	Policy Number: 1702
	Date Revised: October 4, 2018
	Page No: Page 5 of 8

Procedure

Hand Hygiene Products and Dispenser Placement- Procedure:

1. Wall Mount Dispensers:

- 1.1 Placed adjacent to all points-of-care.
- 1.2 At facility entrances and on walls immediately adjacent to the entrance to resident care areas and resident rooms.
- 1.3 One dispenser along the wall adjacent to the elevator
- 1.4 Placed 1.1-1.32 m above the floor to the base of the product to keep it away from small children.
- 1.5 A minimum of 1.2 m distance between each dispenser.

2. Alcohol Based Hand Rub should not be placed:

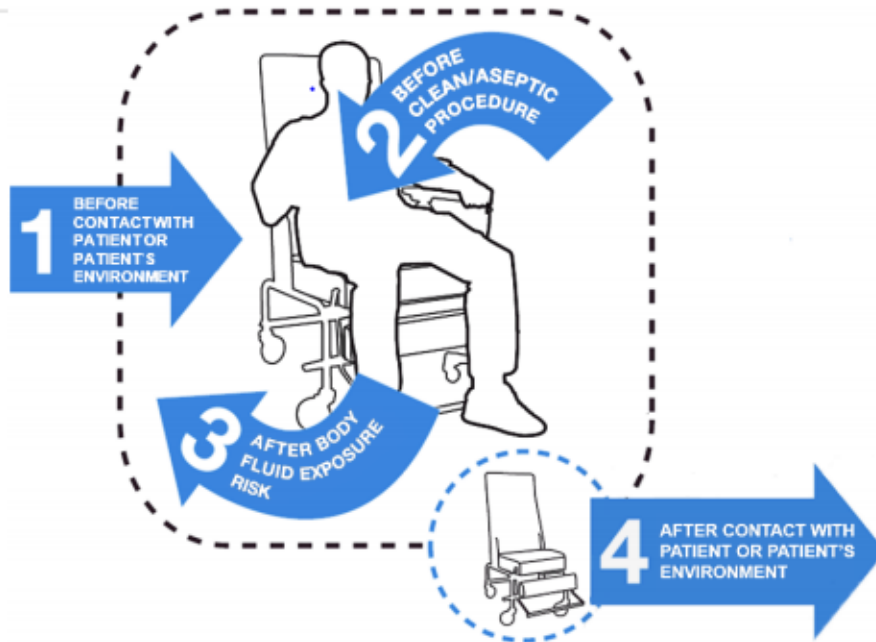
- 2.1 At or adjacent to hand washing sinks.
- 2.2 Over or directly adjacent to an ignition source (electrical outlet or switch).
- 2.3 Above carpeted areas.
- 2.4 In or around stairwells or other minimally supervised areas.

3. Storage of Alcohol Based Hand Rub

- 3.1 See attached Fire Code Variance: Fire Safety and Hand Hygiene in Healthcare Facilities, February 2014.

POLICY NAME: HAND HYGIENE	POLICY NUMBER: 1702
	DATE REVISED: October 4, 2018
	PAGE NO.: Page 6 of 8

Your 4 Moments for Hand Hygiene



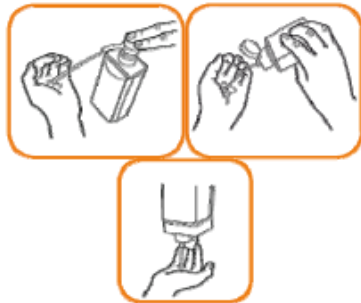
1	BEFORE contact with patient/patient's environment	<i>Why?</i> To protect the patient against harmful germs carried on your hands <i>Example:</i> Before providing patient care
2	BEFORE clean/aseptic procedure	<i>Why?</i> To protect the patient against harmful germs from entering their body <i>Example:</i> Before donning personal protective equipment or collecting a specimen
3	AFTER body fluid exposure risk	<i>Why?</i> To protect yourself and the health care environment from harmful germs <i>Example:</i> After doffing personal protective equipment or handling a specimen
4	AFTER contact with patient/patient's environment	<i>Why?</i> To protect yourself and the health care environment from harmful germs <i>Example:</i> After contacting patient care equipment



Policy Name: HAND HYGIENE	Policy Number: 1702
	Date Revised: October 4, 2018
	Page No: Page 7 of 8

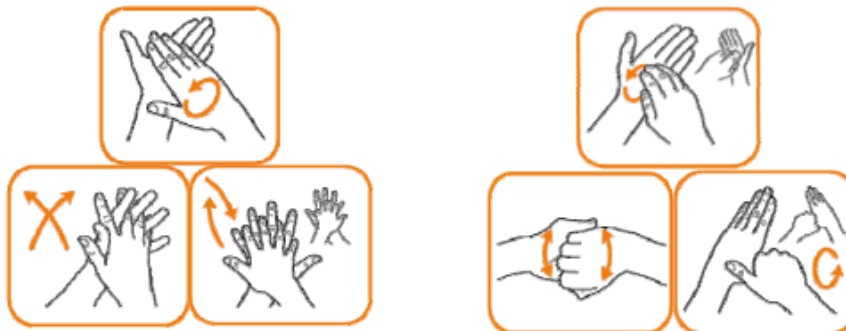


How to Use Alcohol-based Hand Rub



Hands must remain moist with product for at least 15 seconds

1. Apply product to palm of one hand



2. Rub all the surfaces of your hands and wrists

3. Include fingertips and thumbs



4. Rub until hands are completely dry



Policy Name: <h2 style="text-align: center;">HAND HYGIENE</h2>	Policy Number: <h2 style="text-align: center;">1702</h2>
	Date Revised: <h2 style="text-align: center;">October 4, 2018</h2>
	Page No: <h2 style="text-align: center;">Page 8 of 8</h2>



How to Handwash



1. Wet hands with warm water



2. Apply soap and lather thoroughly



Vigorous rubbing of hands (steps 3 & 4) must take at least 15 seconds



3. Rub palms, spaces between fingers, backs of hands and wrists



4. Rub fingers, fingertips and thumbs



5. Rinse under running water



6. Pat hands dry with paper towel



7. Turn off tap with paper towel